



Winter - Faculty Assembly

January 22, 2024



Opening Week - New Students

Maintenance/Operations Workload

- ▶ 3.5 Million Gross Square feet of Buildings
 - ▶ 2.25 Million Academic
 - ▶ 1.25 Million Residential

- ▶ 595 Acres of Property
 - ▶ 495 acres - State Owned: ~220 Acres Maintained
 - ▶ 100 Acres - Auxiliary Services

- ▶ Active Work Requests: 2030 Open Requests
 - ▶ Daily Average - 100
 - ▶ Monthly Average ~2500
 - ▶ Yearly Average ~ 25,000

Capital Projects Workload

- ▶ Active Constructions: 28 Projects
- ▶ Active Designs: 62 Projects
- ▶ Active Requests: 36 Projects

- ▶ Current Value: ~\$300 Million

Staffing

Current Staffing Level is at 59% of Peak

Department	2020 FTE	2024 FTE	% of peak
Custodial	190	119	62%
Maintenance/Operations	85	54	63%
Logistics	43	21	48%
Environmental Health	6	3	50%
Sustainability	2	1	50%
Major Projects	8	5	62%
F S Administration	8	3	38%
Total	342	201	59%

Recently Completed

- ▶ Mary Walker Health Center
- ▶ Sheldon Terracotta Replacement
- ▶ Hewitt Hall Phase I
- ▶ Littlepage Roof Replacement
- ▶ Commissary Roof Replacement
- ▶ Facilities Master Plan Update
- ▶ Residence Life Facilities Master Plan
- ▶ Campuswide Energy Master Plan



Construction

- ▶ Active Construction: 28 Projects
 - ▶ Highlights:
 - ▶ Laker Hall Roof Replacement
 - ▶ Hewitt Hall Phase II
 - ▶ Campuswide Generator Replacement
 - ▶ Removal # 6 Fuel Tank Removal
 - ▶ Shineman Lab 236 - Endowed Chair



Design

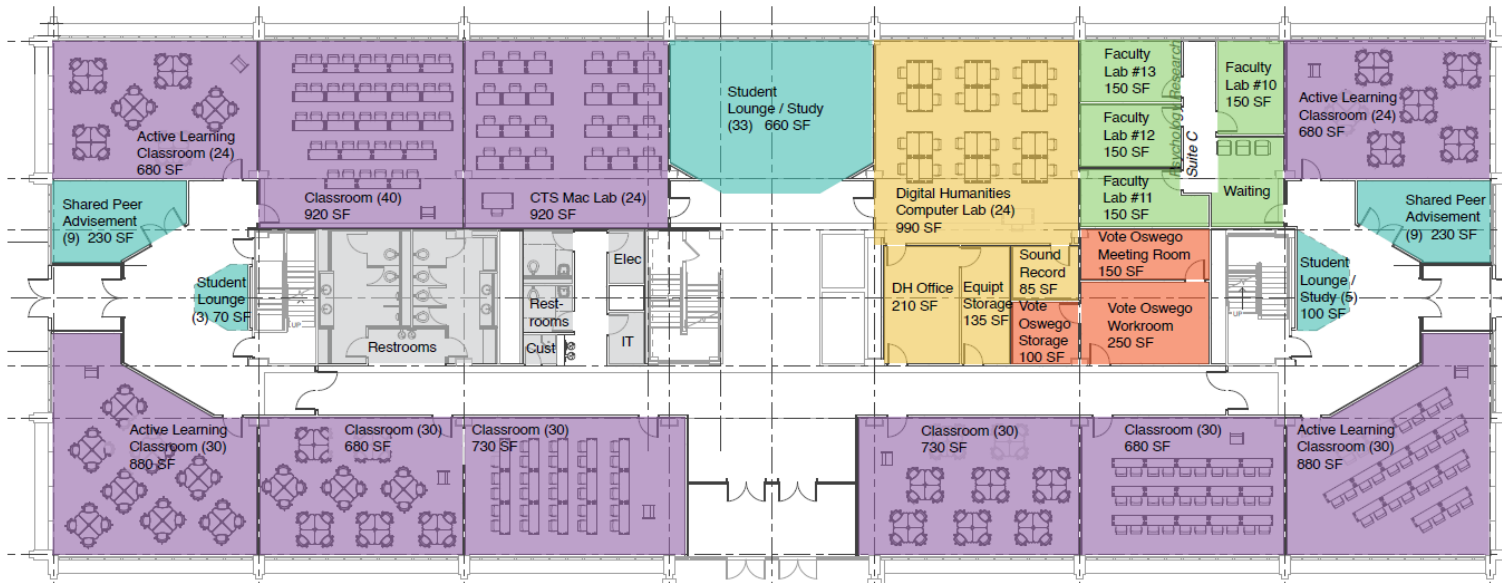
- ▶ 2024/2025 Critical Maintenance Projects: \$6.2M
 - ▶ Highlights
 - ▶ Sheldon Steam Line Replacement
 - ▶ Sheldon East Parking lot Upgrades
 - ▶ Sheldon Hall Ballroom Mechanical Upgrades
 - ▶ Poucher Hall Roof
 - ▶ Poucher Hall Mechanical Upgrades
 - ▶ Pathfinder Dining Hall Upgrades
 - ▶ Minor Critical Maintenance

Design

- ▶ Active Design: 58 Projects
 - ▶ Highlights
 - ▶ Hewitt FFE Packages
 - ▶ Rehab Mahar Hall
 - ▶ Mahar Hall Surge
 - ▶ Parking lots E6, E18 & R9
 - ▶ Tyler Phase III - Exterior Envelope
 - ▶ Campuswide Elevator Assessment

Design: Mahar Hall

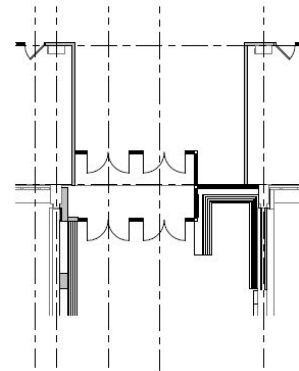
Schematic Plan - First Floor Plan



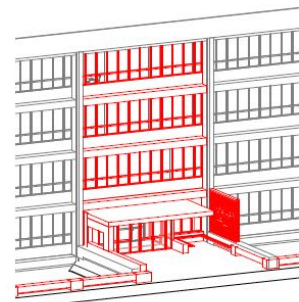
- | | | | |
|--|---|--|--|
| ANTHROPOLOGY | PSYCHOLOGY | HUMAN DEVELOPMENT | CLAS DEAN |
| ECONOMICS | CRIMINAL JUSTICE | CLASSROOM / SEMINAR | BUILDING SUPPORT / OTHER |
| HISTORY | DIGITAL HUMANITIES | PHILOSOPHY | |
| POLITICAL SCIENCE | SOCIOLOGY | SHARED SPACES | |

Design Mahar Hall

Option 3

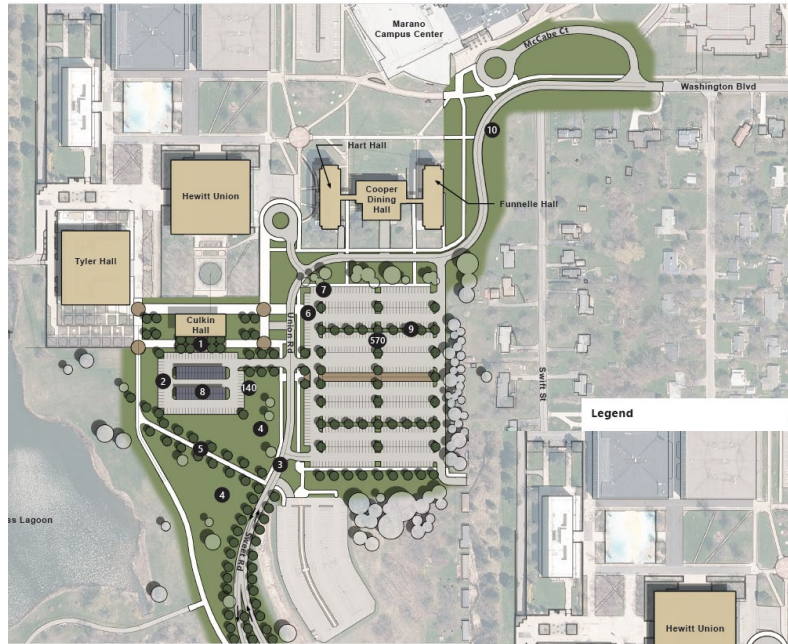


First Floor Plan - Opt 3



Axonometric

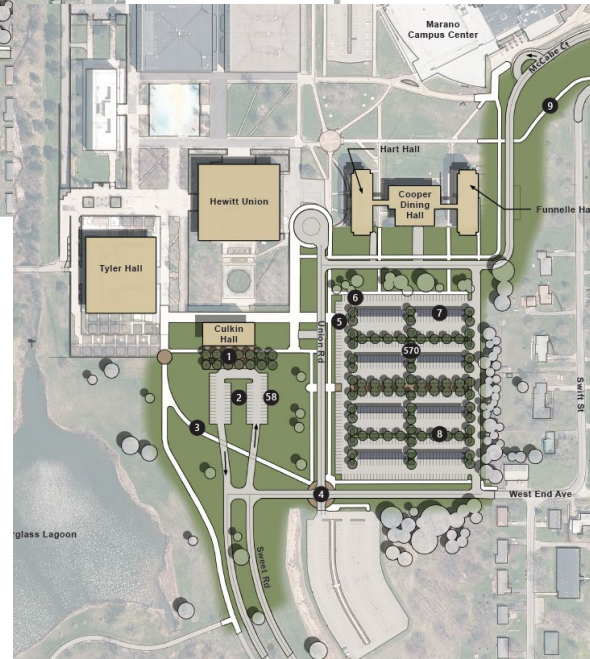
Design: Main Entrance/Parking Lots



SUNY Oswego Culkin Hall
Option C



SUNY Oswego Culkin Hall
Option B



SUNY Oswego Culkin Hall
Option A

- Legend**
- 1. Culkin Plaza
 - 2. Parking Lot
 - 3. Arrival and Roundabout
 - 4. Curving Entry Road
 - 5. Pedestrian Walkway
 - 6. EV Parking/Charging
 - 7. Accessible Parking
 - 8. Solar Panels, Typ.
 - 9. Green Infrastructure
 - 10. Pedestrian Connection to Washington Blvd.

- Legend**
- 1. Culkin Plaza
 - 2. Parking Lot
 - 3. Pedestrian Walkway
 - 4. Pedestrian Node
 - 5. EV Parking/Charging
 - 6. Accessible Parking
 - 7. Solar Panels, Typ.
 - 8. Green Infrastructure
 - 9. Pedestrian Connection to Washington Blvd.



Planning

- ▶ Projects: 36 Design Requests
 - ▶ Penfield/Lanigan Connector & Base MEP
 - ▶ Culkin Hall Mechanical Upgrades/Rehab first floor & Basement Levels

- ▶ Master Plans/Studies: Strategic Plan
 - ▶ Academic Facility Master Plan Update
 - ▶ Residential Life Master Plan
 - ▶ Campuswide Energy Master Plans

Planning: Energy Master Plan

Clean Energy Master Plan Consolidated Report

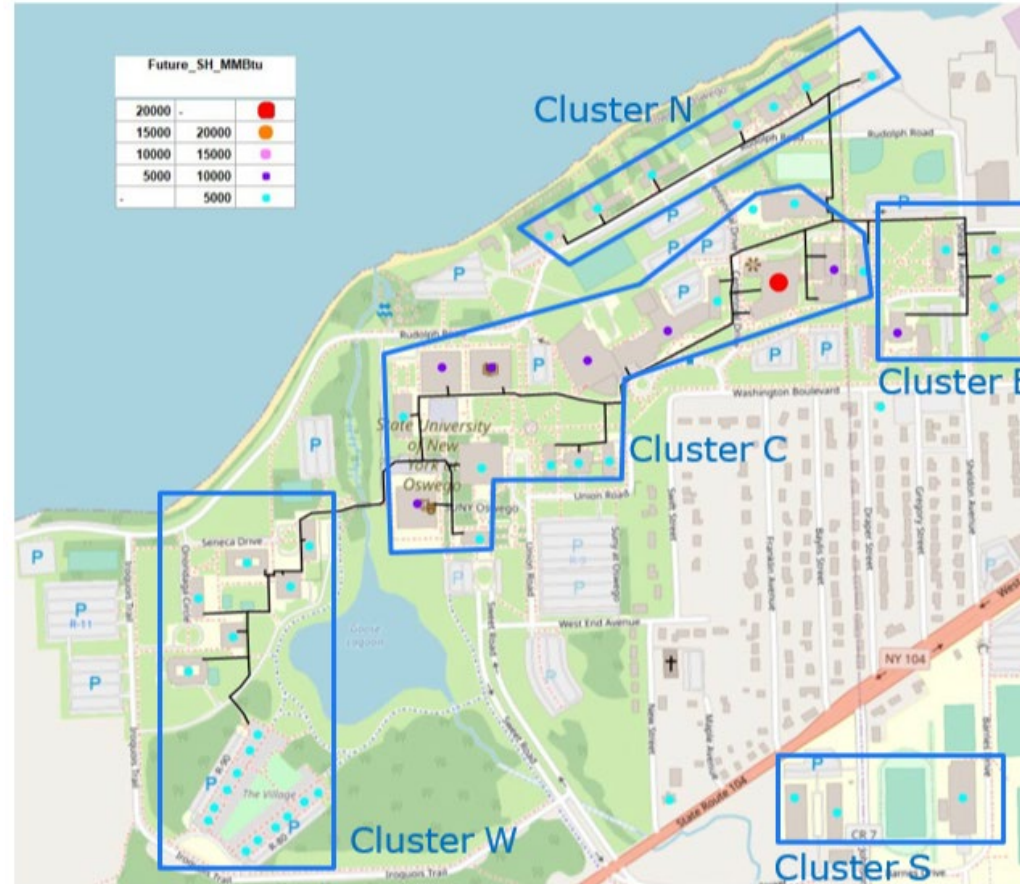


Figure 34. Heating and cooling clusters

Planning: Energy Master Plan

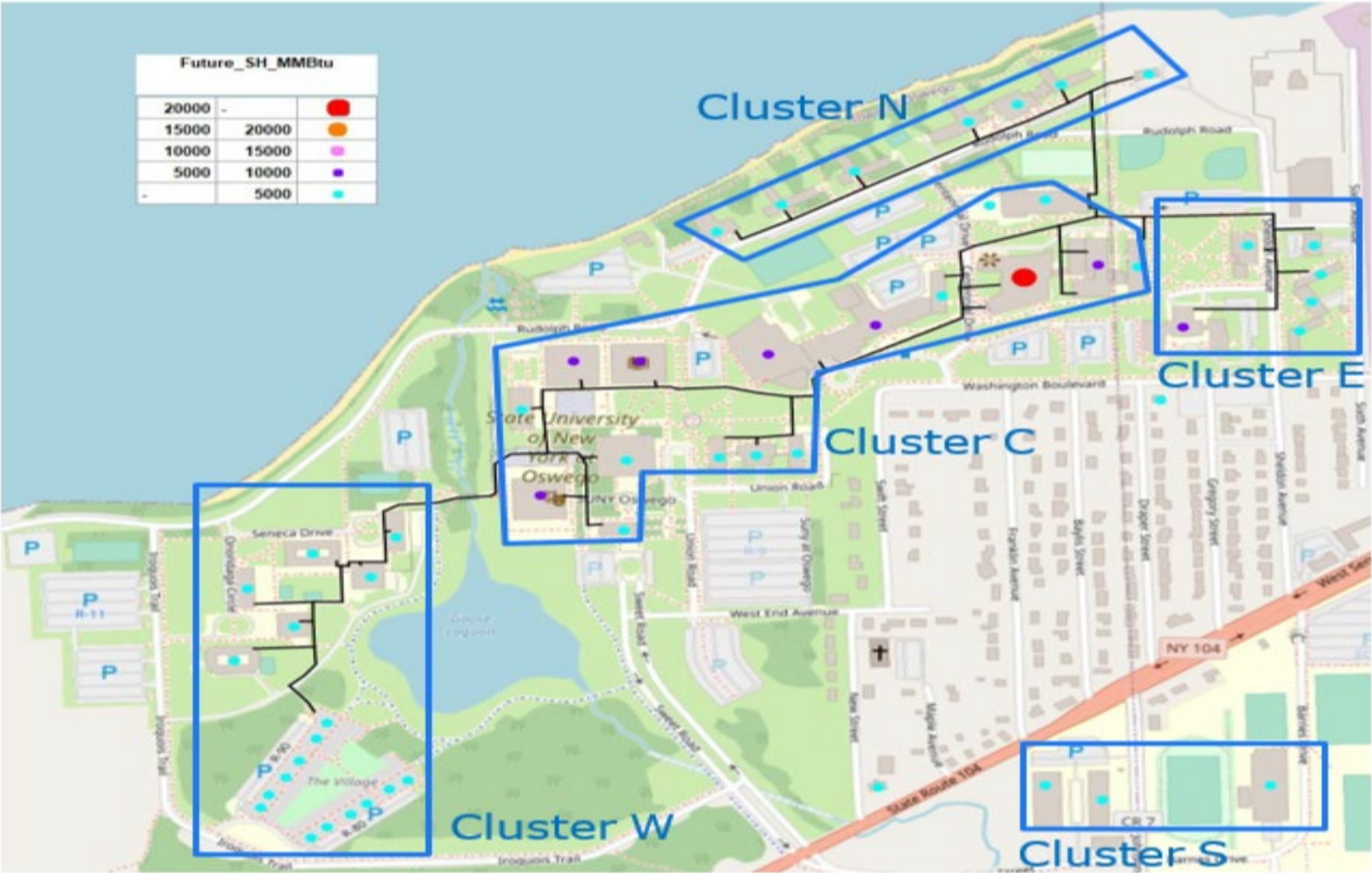


Figure 34. Heating and cooling clusters

Planning

- ▶ SUCF has scheduled SUNY Oswego for \$200m capital appropriation from 2024 -2029
 - ▶ Penfield/Lanigan Connector & Base MEP
 - ▶ Phase I Lanigan Hall, Connector, Penfield Mechanicals
 - ▶ Includes Comprehensive Program Study
 - ▶ Approved SUCF Trustee Resolution \$110m
 - ▶ Phase II... Remainder Penfield Library
 - ▶ Requires Additional Appropriation

Future Schedule

▶ Focus:

- ▶ Hewitt Hall Occupancy..... Jan. - Aug. 2025

- ▶ Mahar Design Complete August 2024
- ▶ Mahar Hall Construction..... Aug. 2025 - June 2027
- ▶ Mahar Hall Occupancy August 2027

- ▶ Penfield/Lanigan/Connector Program Study..... June 2024 - Jan 2026
- ▶ Penfield/Lanigan/Connector Design..... Jan 2026 - Jan. 2027
- ▶ Penfield/Lanigan/Connector Construction..... May 2027 - Aug. 2029

- ▶ Renewal of Campus Recreational Facilities..... TBD
- ▶ Renewable Energy Infrastructure..... Ongoing
- ▶ Un-championed Maintenance and Repair..... Ongoing

Questions?