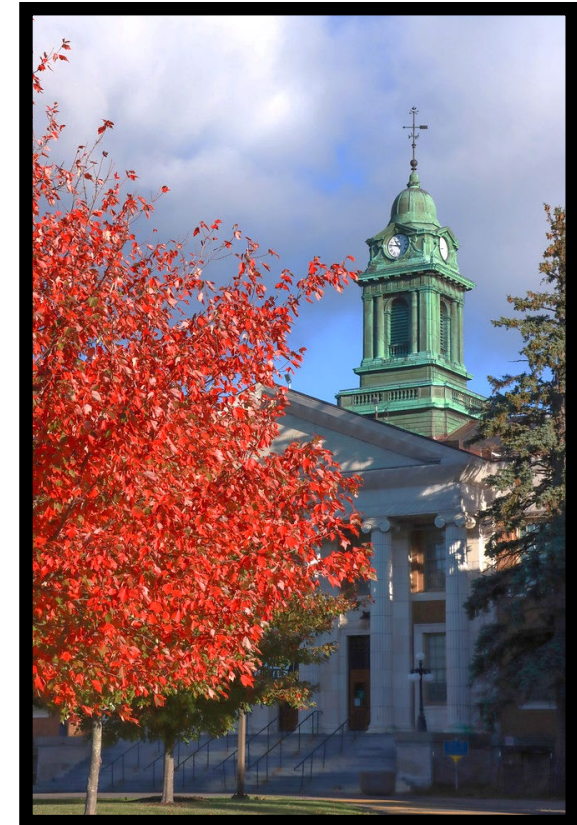

Faculty Assembly Budget Presentation

November 7, 2022

Victoria L Furlong, Vice President Administration & Finance

Agenda

- **SUNY Oswego Enrollment**
 - Overall, Five years, Residential Housing
- **University Budget**
 - Summaries, COVID19, HEERF
- **Oswego College Foundation**
 - Philanthropy, Scholarships
- **Capital Updates**
 - Concept, Design, Construction, Planning

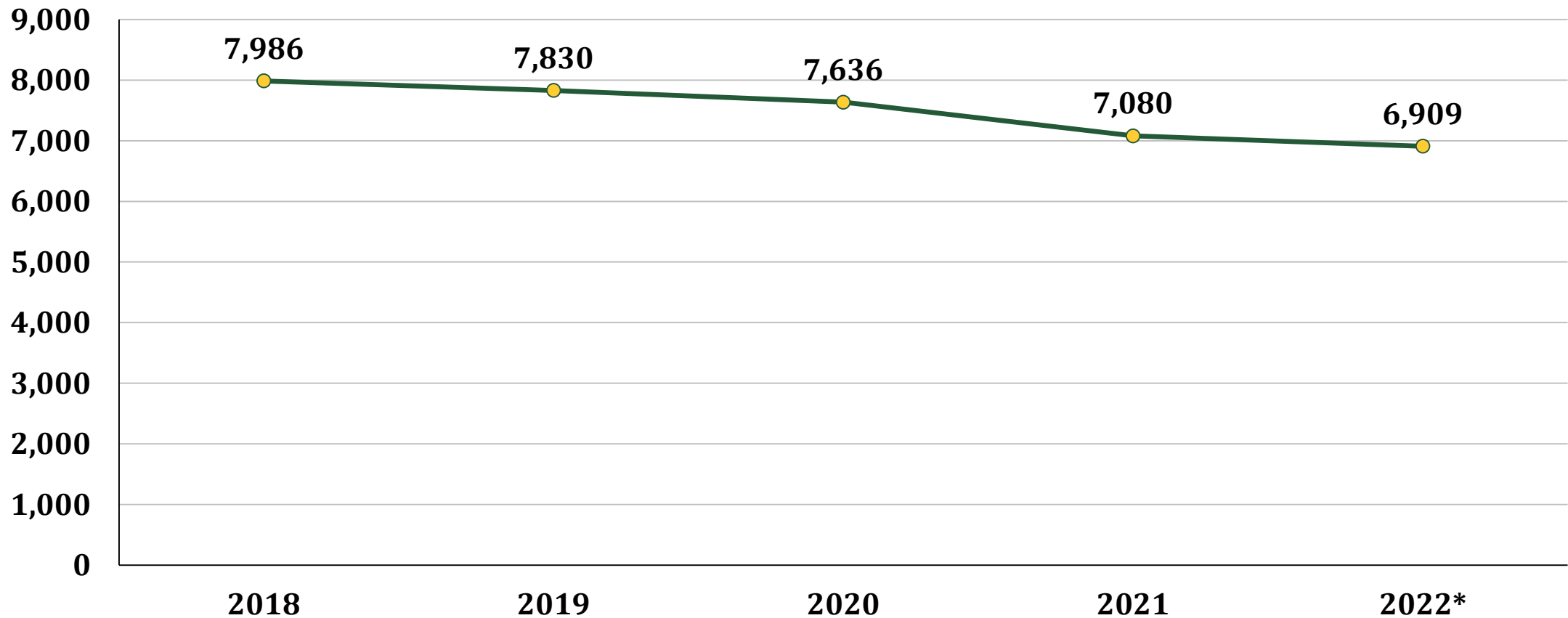


SUNY Oswego Undergraduate + Graduate Students*

- 6,909
 - 5,988 undergraduate
 - 921 graduate
- 2,334 (34%) are culturally-diverse
- 1,836 (27%) from NYC and Long Island
- 1,972 (29%) from Oswego and contiguous counties
- 1255 (4%) are international students from 35 different countries
- 270 (4%) of US students are from outside NY state
 - 35 states and the District of Columbia

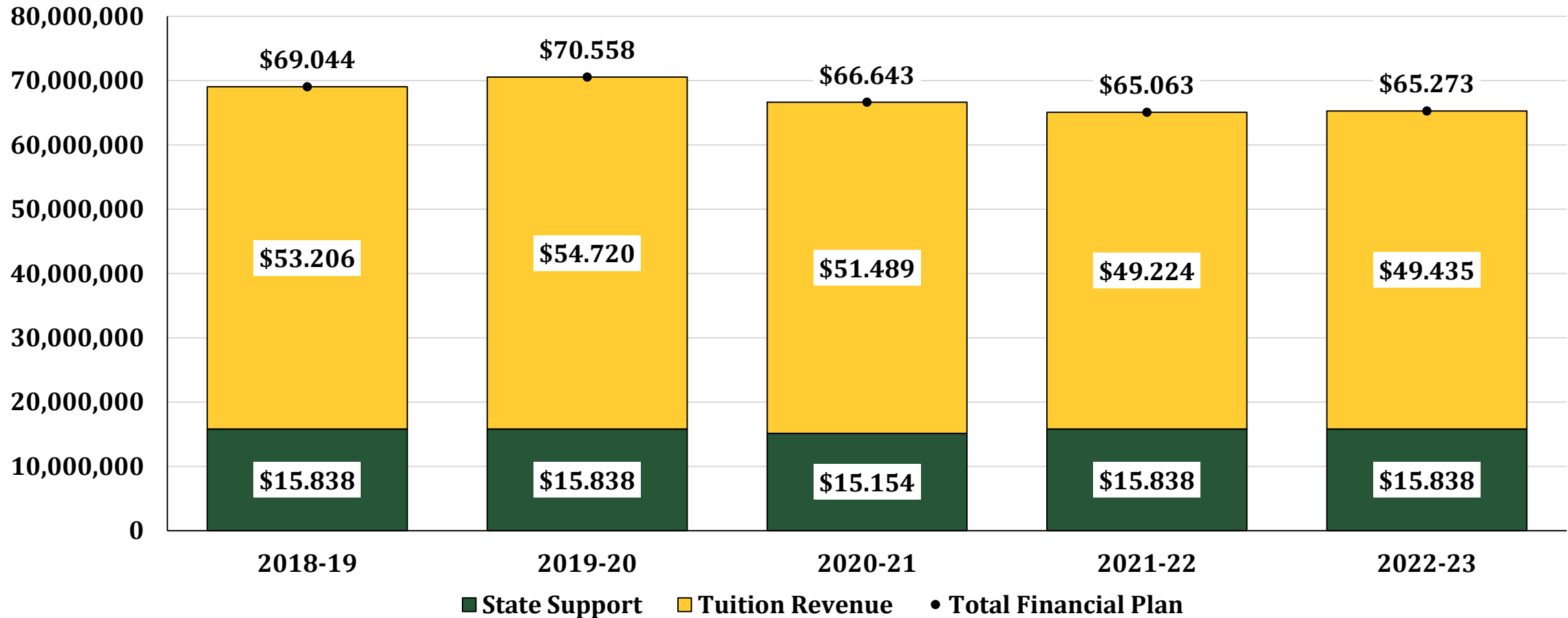


SUNY Oswego Fall Official Headcount Fall 2018-2022

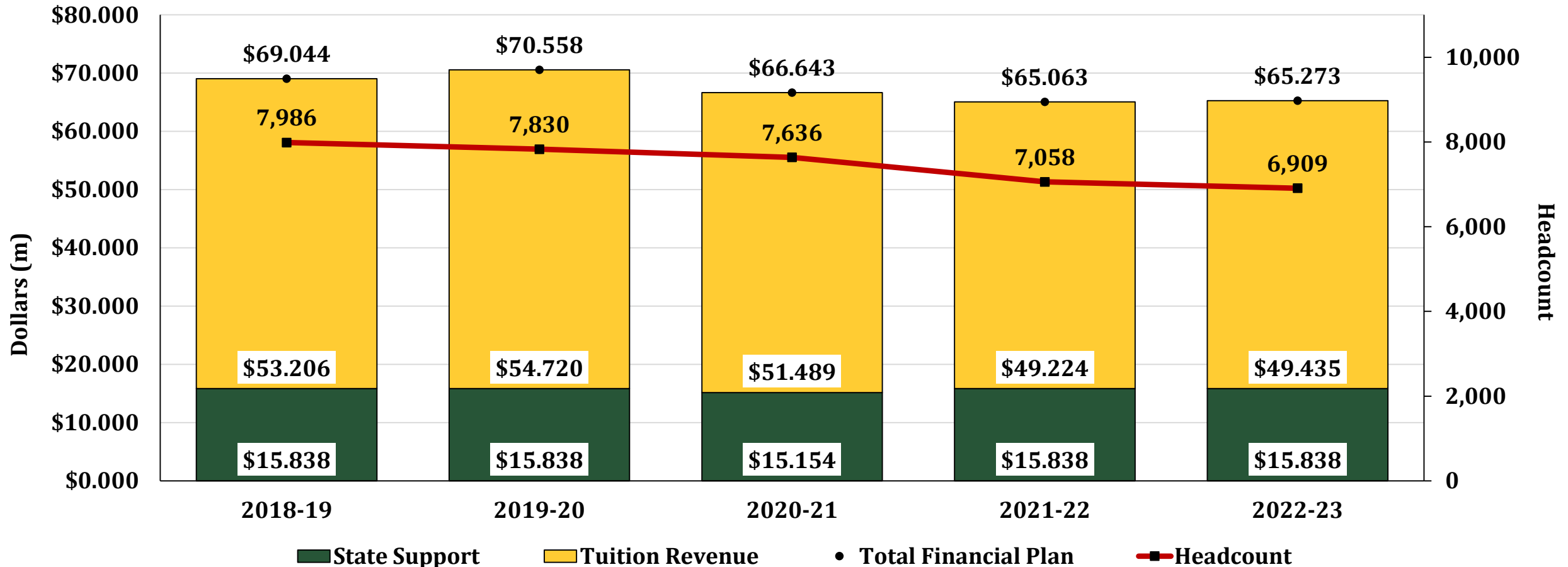


*2022 data preliminary as of October 14, 2022; totals exclude exchange students.

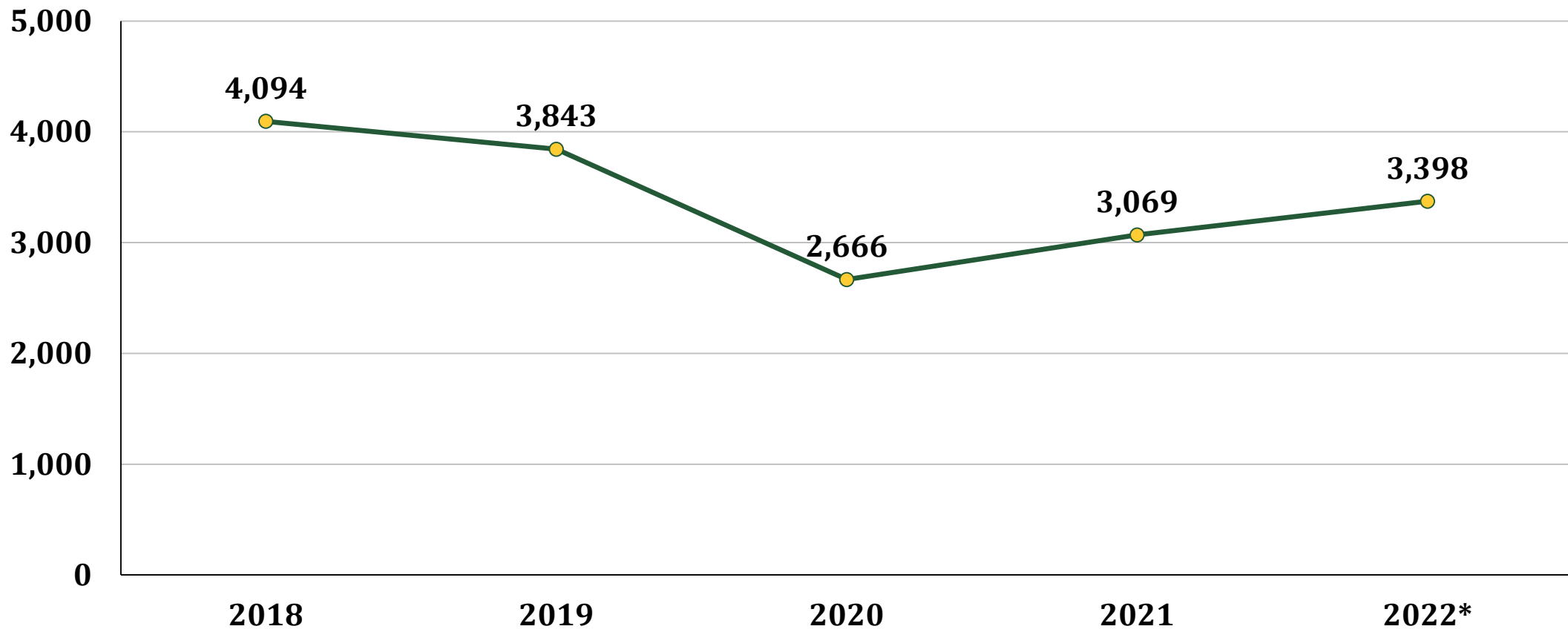
SUNY Oswego 2022-2023 Budget: Five Year Financial Plan Summary



SUNY Oswego 2022-2023 Budget: Five Year Financial Plan with Enrollment

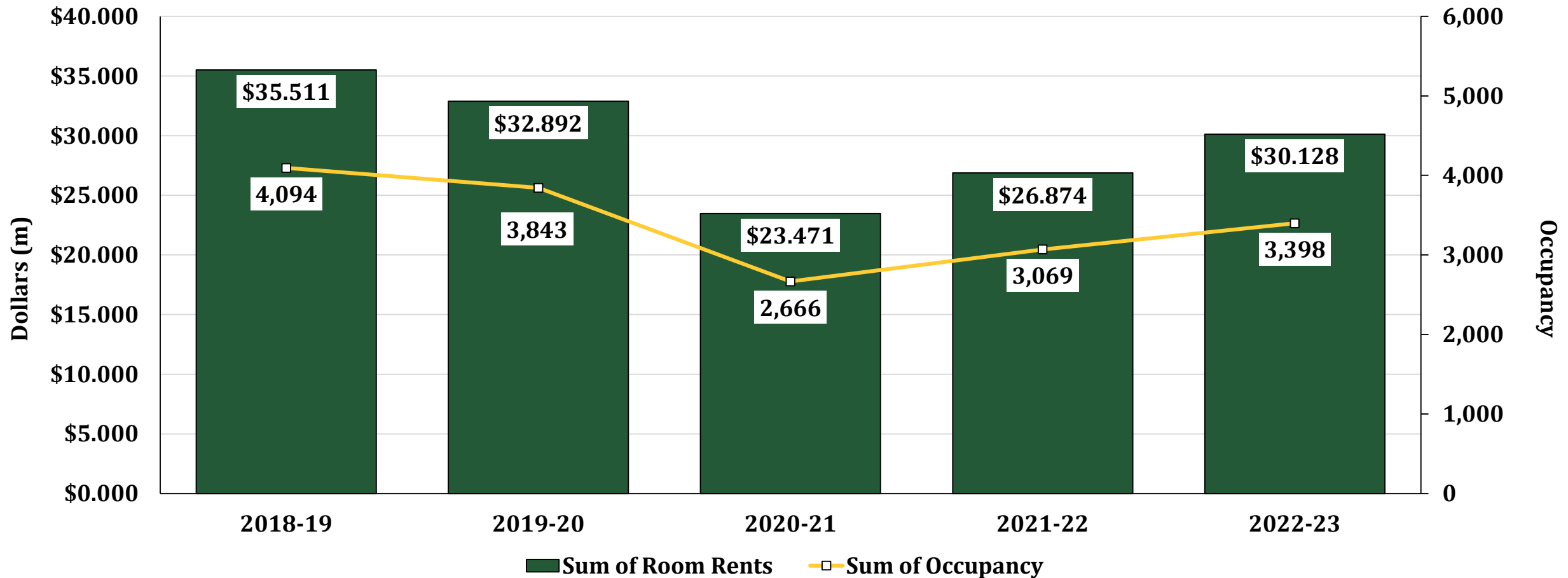


Students Living in On-Campus Residential Housing Fall Semesters Occupancy 2018-2022



*2022 data preliminary as of October 14, 2022.

Students Living in On-Campus Residential Housing Occupancy and Room Rents 2018-2023*



*2022 data preliminary as of October 14, 2022.

New York State 2022-2023: Additions and Subtractions for SUNY Oswego

Additions	Amount
TAP GAP Elimination	\$2,600,000
Tuition Reset for Excelsior	\$600,000
Funding for New Faculty	\$500,000
Enrollment Initiatives*	\$500,000
Total	\$4,200,000

Subtractions	Amount
Contractual Raises	\$3,700,000
Decline in Enrollment	\$2,300,000
Increased Utility Costs	\$TBD
Total	\$6,000,000+TBD

*One time allocation

SUNY Oswego 2022-2023 Budget

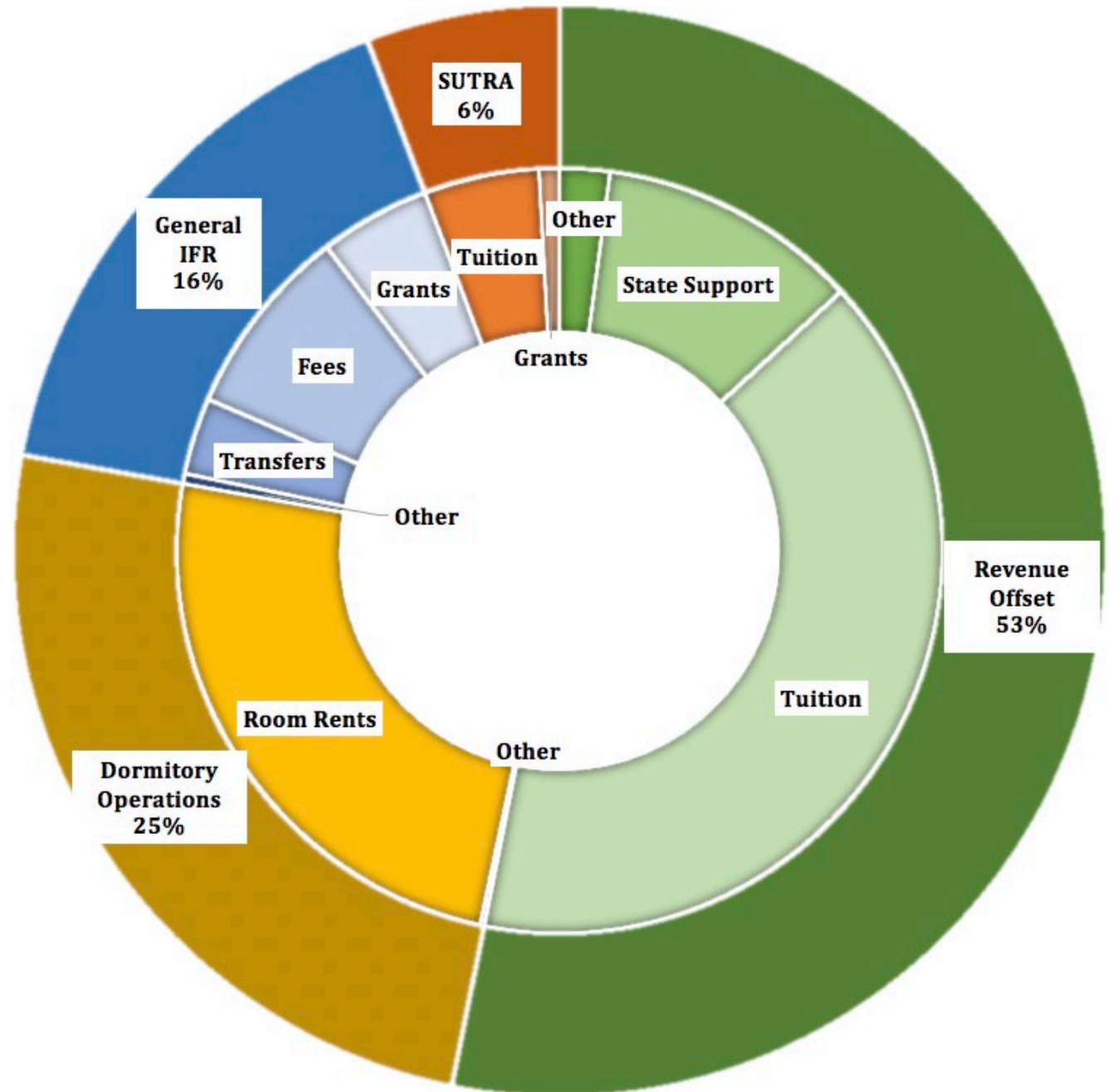
Revenues/Receipts

Revenue Offset = Operations

IFR = Income Fund Reimbursable

SUTRA = State University Tuition Reimbursement Account

Transfers = Journal Transfers



SUNY Oswego 2022-2023 Budget

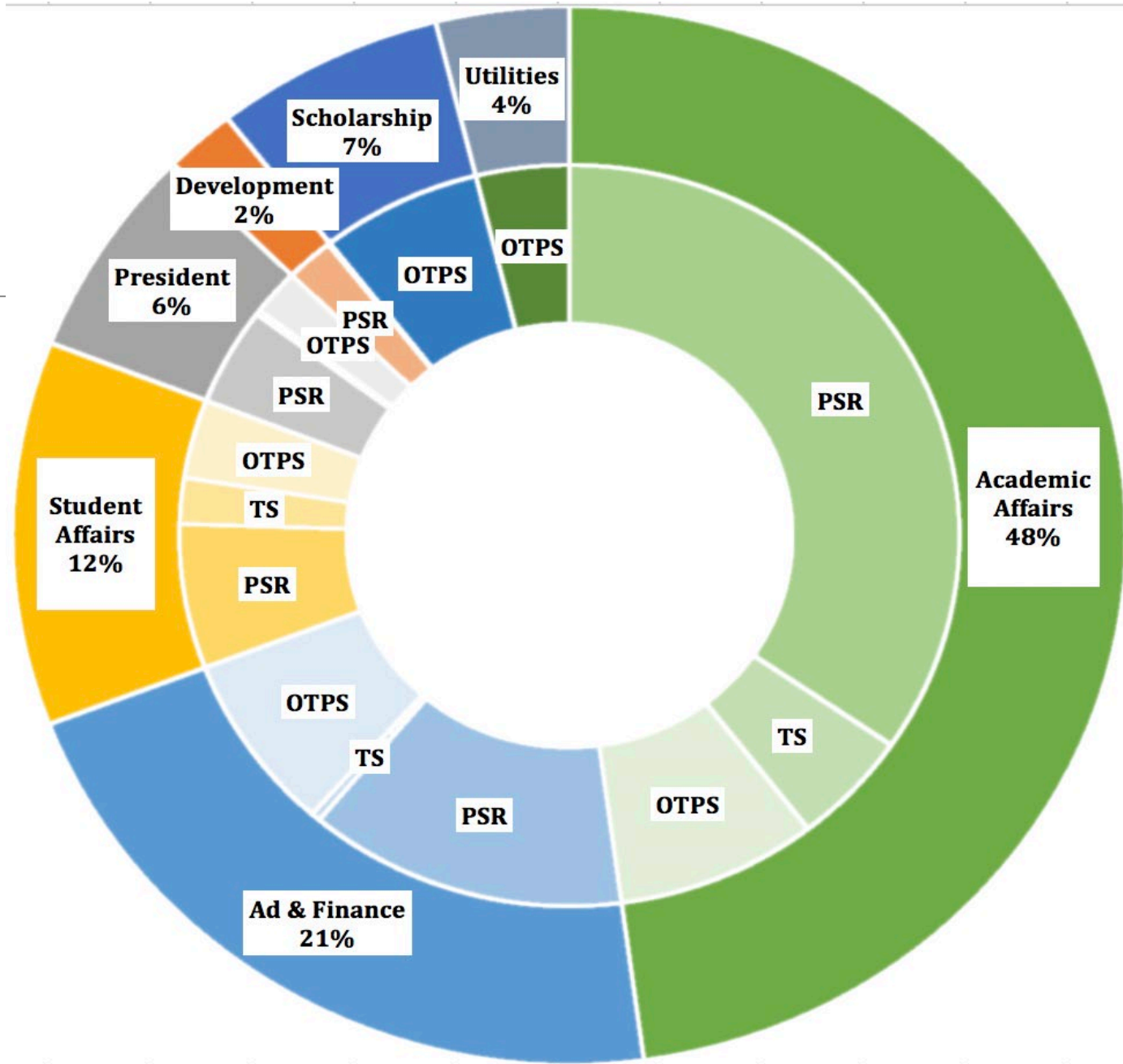
Allocations/Disbursements

President Division

- President's Office
- CDIO/Triandiflou
- COM & Marketing
- IRA
- Title IX
- Enrollment Management

Administration & Finance Division

- Finance
- Human Resources
- University Police Department
- Facilities: custodial, grounds, trades, etc.



SUNY Oswego COVID-19 Related Expenses

Item	Cost
Nurses	\$174,000
PPE	\$763,500
Student Workers	\$202,140
Wastewater Testing	\$145,000
Saliva Testing	\$2,356,085
Retrofitting	\$68,000
Quarantine/Isolation	\$291,800
Other (IT, Signage, Tents)	\$383,200
Total*	\$4,383,725

Synopsis of Federal Relief Funding: Higher Education Emergency Relief Fund (HEERF)*

Funding Source	Amount	Use	Distributed
HEERF I: CARES	\$3,622,358	Student Emergency Grants	Disbursement complete as of December 31, 2020
HEERF I: CARES	\$3,981,012	Institutional Use	Disbursement complete as of September 24, 2020
HEERF II: CRSSA	\$3,622,358	Student Emergency Grants	Disbursement complete as of December 8, 2021
HEERF II: CRSSA	\$9,809,421	Institutional Use	Disbursement complete as of November 23, 2021
HEERF III: ARP	\$11,281,137	Student Emergency Grants	Disbursement complete as of March 31, 2022
HEERF III: ARP	\$12,120,324	Institutional Use	Disbursements in Process

Oswego College Foundation

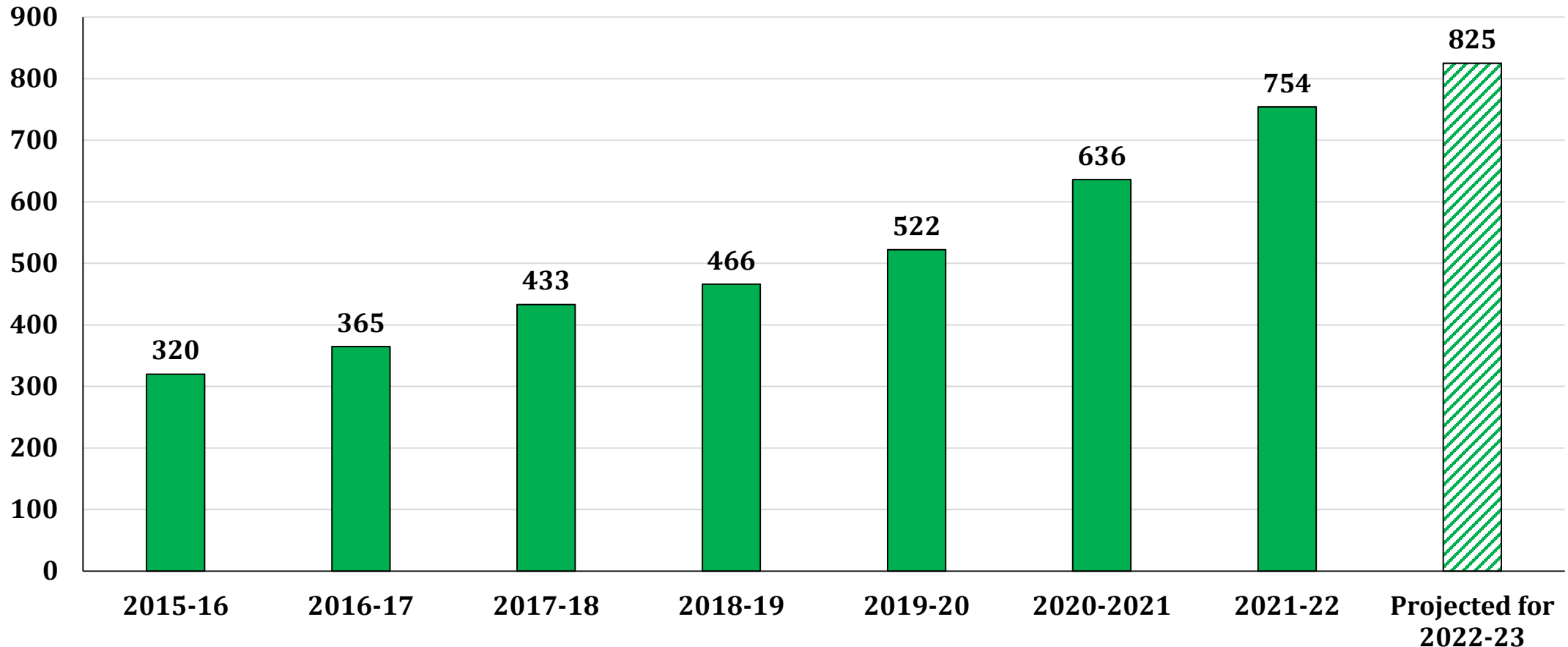
- Endowment is currently **over \$52.3 million***
- Raised over \$8.6 million last fiscal year
- OCF provided over \$3.7 million in support of students and campus
 - \$1.7m in student scholarship support
 - \$2m in support of campus programs and departments



Oswego College Foundation, Inc.

Number of Donor Funded Student Scholarship Recipients

Years Ended June 30 *(with projection for 2022-2023)*



SUCF - Capital Updates: Concept Development

- Tyler Hall Phase III: \$5.5m
- Penfield Lanigan Connector: \$76m
 - Penfield Library and Resource Center
 - Lanigan Hall Rehab
- Student Life Facility: \$30m
- Sheldon Hall East Wing Rehab: \$32m



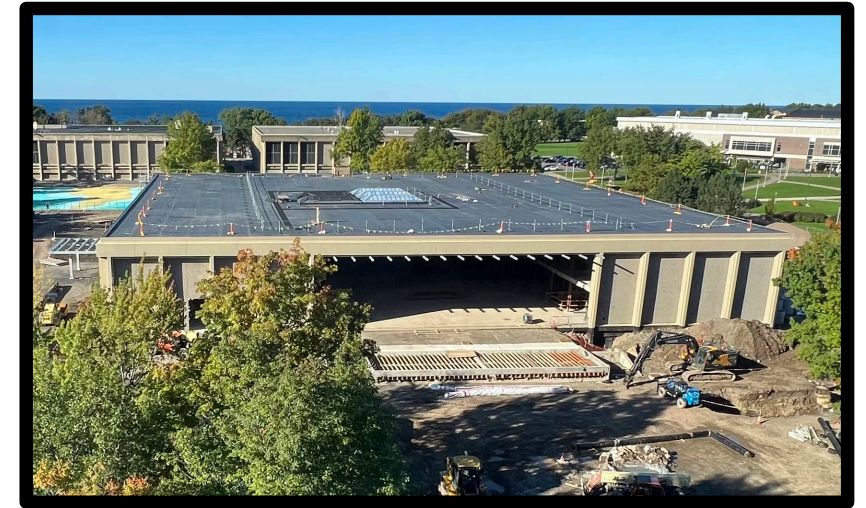
SUCF – Capital Updates: Design Activity

- Hewitt Hall Phase II: \$42.5m
 - Interior Rehabilitation
- Mahar Hall Rehab: \$45m
 - Comprehensive Rehabilitation
- Hewitt Quad (including Geothermal): \$5m
- Critical Maintenance
 - Emergency Generators: \$2.5m
 - Laker and Wilber Roofs: \$6.1m
 - HVAC: \$3.4m



SUCF - Capital Updates: Construction Activity

- Hewitt Hall Phase I: \$18m
- Sheldon Terracotta: \$14m
- Hart Hall Upgrades: \$1.3m
- Artville/Bookville Relocation: \$1.3m
- Rudolph Road Steam Line: \$5m



SUCF - Capital Updates: Planning

- Campuswide Energy Master Plan
 - 100% Renewable Energy by 2035
 - Net Zero Carbon Footprint
- Residence Life Master Plan
- Academic Facilities Master Plan Update
- Student Engagement Space Assessment



Questions?

